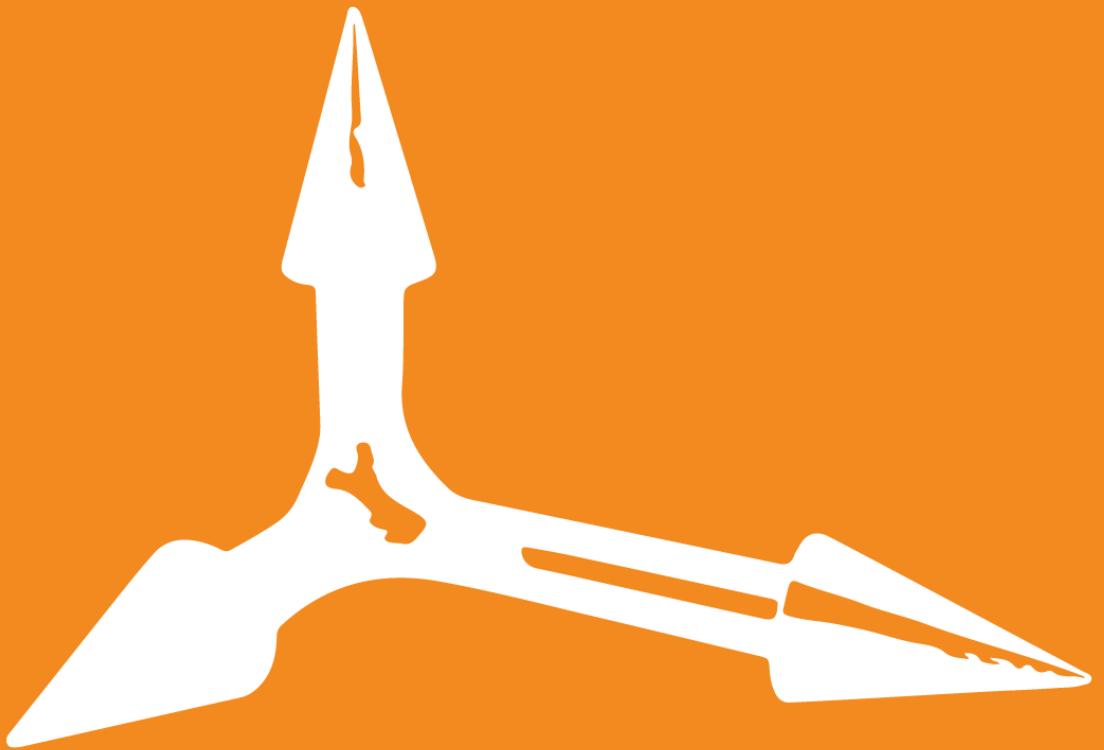


QUICK GUIDE

A QUICK TECHNICAL OVERVIEW
FOR VARIOUS ANTENNAS & ACCESSORIES



CELLULAR & M2M

XPOL - 2



Frequency:	698-2700 MHz
Max Gain:	9dBi - Directional (2x2 MIMO)
Polarisation:	Vertical & Horizontal
Size (LxWxD):	255mm x 250mm x 80mm

XPOL - 2 -5G



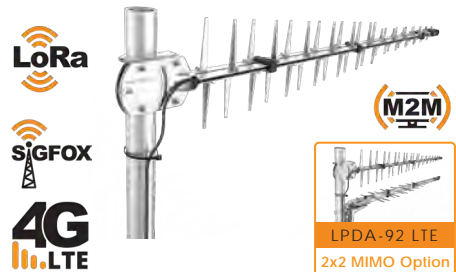
Frequency:	690-960, 1710-2700 & 3400-3800 MHz
Max Gain:	11dBi - Directional (2x2 MIMO)
Polarisation:	Vertical & Horizontal
Size (LxWxD):	255mm x 250mm x 80mm

XPOL - 16



Frequency:	450-470, 790-860, 1710-2170 MHz
Max Gain:	8dBi - Directional (2x2 MIMO)
Polarisation:	+45° and -45°
Size (LxWxD):	350mm x 350mm x 90mm

LPDA - 92



Frequency:	698-3000 MHz
Max Gain:	12dBi - Directional (SISO)
Polarisation:	Linear Vertical
Size (LxWxD):	1100mm x 180mm x 60mm

2

variants

LTE MIMO	
Description:	2 x LPDA-92 with BRKT-30 or BRKT-33
BRKT-30*	Horizontal Mount for Single LPDA-92
BRKT-33*	Cross-polarised +45°/-45° (V-form bracket)

*See bracket options under Accessories

CELLULAR & M2M

OMNI-403



Frequency:	698-2700 MHz
Max Gain:	4dBi
Polarisation:	Linear Horizontal / Vertical
Size (LxWxD):	+250 mm x Ø75 mm

OMNI - 280



Frequency:	698-960, 1710-2700, 3400-3800 MHz
Max Gain:	3.8dBi - Omni Directional
Polarisation:	Linear Vertical
Size (LxWxD):	150mm x 60mm x 40mm

OMNI - 510 -02



Frequency:	698 - 2700 MHz
Max Gain:	2dBi
Polarisation:	Linear Horizontal / Vertical
Size (LxWxD):	138mm x 26mm x 10mm

OMNI - 85



Frequency:	790 - 2700 MHz
Max Gain:	2.5dBi - Omni Directional
Polarisation:	Linear Vertical
Size (LxWxD):	210mm x 20mm x 14mm

CELLULAR & M2M

OMNI - 121

4G
LTE



Frequency:	690-960, 1710-2170, 2500-2600 MHz
Max Gain:	6dBi - Omni Directional
Polarisation:	Linear Vertical
Size (LxWxD):	555mm x 50mm x 50mm

OMNI-292-V2

4G
LTE



Frequency:	698-960, 1710-2700 MHz
Max Gain:	7.5dBi - Omni Directional
Polarisation:	Linear Vertical
Size (LxWxD):	665mm x 75mm x 75mm

OMNI - 291

Wi-Fi

450
MHz

4G
LTE



Frequency:	450-470, 690-960, 1710-2700 MHz
Max Gain:	7.5dBi - Omni Directional
Polarisation:	Linear Vertical
Size (LxWxD):	560mm x 75mm

XPOL - 1

4G
LTE



Frequency:	790-960, 1710-2700 MHz
Max Gain:	4dBi - Omni Directional (2x2 MIMO)
Polarisation:	+45° and -45°
Size (LxWxD):	215mm x 135mm x 85mm

CELLULAR & M2M

DASH - 1



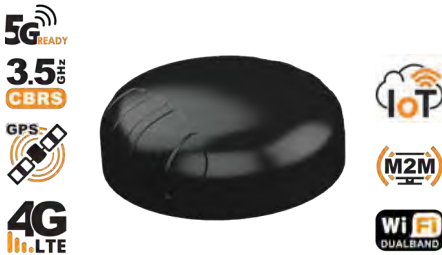
Frequency:	690-2700 MHz
Max Gain:	4dBi - Omni Directional
Polarisation:	Linear Horizontal/ Vertical
Size (LxWxD):	258mm x 34mm x 13mm

OMNI - 600 - 2



Frequency:	698-960, 1710-2700, 3400-3800 MHz
Max Gain:	3.8dBi - Omni Directional
Polarisation:	Linear Vertical
Size (LxWxD):	150mm x 60mm x 40mm

PUCK - SERIES



	LTE	WI-FI	GPS
	690-960, 1710-2700, 3200-3800 MHz Peak Gain: 6dBi	2.4GHz & 5GHz Dual-band Peak Gain: 7.5dBi	1575.42 / 1600 MHz
PUCK-1	SISO Antenna 1 x LTE		
PUCK-2	MIMO Antenna 2 x LTE		
PUCK-7	MIMO Antenna 2 x LTE	MIMO Antenna 2 x WI-FI	
PUCK-8	MIMO Antenna 2 x LTE	SISO Antenna WI-FI	

OMNI-402



Frequency:	410 - 3800 MHz
Max Gain:	6.2dBi
Polarisation:	Linear Horizontal / Vertical
Size (LxWxD):	650 mm x Ø71 mm

MOBILITY

MIMO - 1



5-in-1 Antenna	2x LTE; 2x Wi-Fi (Dual Band); 1x GPS
Frequency:	698-960, 1710-2700, 5000-6000 MHz
Max Gain:	6.2dBi - Omni Directional (2x2 MIMO)
Polarisation:	Linear Vertical
Size (LxWxD):	252mm x 127mm x 55mm

variants

MIMO-1-1	MIMO-1-2
2-in-1 Antenna 2 x LTE	3-in-1 Antenna 2 x LTE; 1 x GPS
698-960, 1710-2700 MHz	
4.5dBi - Omni Directional (2x2 MIMO)	

MIMO - 3



Frequency:	450-470, 698-960, 1710-2700, 3400-3800, 5000-6000 MHz
Max Gain:	6.0dBi - Omni Directional (2x2 MIMO)
Polarisation:	Linear Vertical
Size (LxWxD):	252mm x 134mm x 120mm

variants

MIMO-3-15	MIMO-3-13	MIMO-3-12
5-in-1 Antenna 2 x LTE; 2 x Wi-Fi; 1 x GPS	3-in-1 Antenna 2 x LTE; 1 x GPS	2-in-1 Antenna 2 x LTE
450-470, 698-960, 1710-2700, 3400-3800 MHz		
6.0dBi - Omni Directional (2x2 MIMO)		

MOBILITY

PUCK - 4



Frequency:	690-960, 1710-2700, 3200-3800 MHz
Max Gain:	6dBi - Omni Directional (2x2 MIMO)
Polarisation:	Linear Vertical
Size (LxWxD):	Ø99.3mm x 36mm

PUCK - 5



Frequency:	690-960, 1710-2700, 3200-3800 MHz
Max Gain:	6dBi - Omni Directional (2x2 MIMO)
Polarisation:	Linear Vertical
Size (LxWxD):	Ø93.3mm x 36mm

INDUSTRIAL WIFI

WLAN - 60

3.5 GHz
CBRS



Frequency:	2400-2500, 3300-3800 & 5000-6000 MHz
Max Gain:	18dBi - Directional (SISO)
Polarisation:	Linear Vertical
Size (LxWxD):	240mm x 240mm x 60mm

WLAN - 61

4 x 4 MIMO



Frequency:	2400-2500 & 5000-6000 MHz
Max Gain:	11dBi - Directional (4X4 MIMO)
Polarisation:	Vertical & Horizontally, +45° & -45°
Size (LxWxD):	240mm x 240mm x 60mm

OMNI - 296

Intrinsically safe option available

3.5 GHz
CBRS



Frequency:	2400-2500, 3300-3800, 5000-6000 MHz
Max Gain:	7.5dBi - Omni Directional (SISO)
Polarisation:	Linear Vertical
Size (LxWxD):	485mm x 75mm x 75mm

PUCK - 12

5G^{READY}

3.5 GHz
CBRS



4G
Li.LTE



Frequency:	2400 - 2500 & 5000 - 6000 MHz
Max Gain:	7.5dBi - Omni Directional (2x2 MIMO)
Polarisation:	Linear Vertical
Size (LxWxD):	Ø99.3mm x 36mm

RFID

PATCH - 25



Frequency:	860 - 960 MHz
Max Gain:	8.75dBi - Directional
Polarisation:	Right Hand Circular
Size (LxWxD):	250mm x 250mm x 40mm

PATCH - 26



Frequency:	820 - 970 MHz
Max Gain:	8dBi - Directional
Polarisation:	Linear
Size (LxWxD):	250mm x 250mm x 40mm

ACCESSORIES

Coming Soon

BRKT-40



BRKT-40

Omni Antenna to Universal Bracket Adapter with Brass Inserts. Thread size: 1"-14 TPI

Suitable to use as accessories and/or replacement parts for the following antennas: OMNI-69, OMNI-292, OMNI-296, OMNI-275, OMNI-400 & OMNI-291

BRKT - 38



Heavy Duty Stainless Steel Marine Ratchet Rail Mount Antenna Bracket
for OMNI 291, OMNI-400

BRKT - 37



Heavy Duty Stainless Steel Marine Flat Mount Antenna Bracket 1"-141
for OMNI 291, OMNI-400

BRKT - 39



Heavy Duty Stainless Steel Marine Mount Antenna Bracket 1"-141
for OMNI 291, OMNI-400

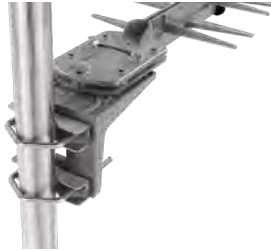
BRKT - 33



±45° Polarisation Bracket
for 2 x LPDA 92

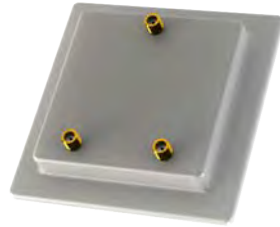
ACCESSORIES

BRKT - 30



LPDA 92 LTE Horizontal Mounting Bracket
for 2 x LPDA 92

SPLT - 13



Cellular 2-Way Splitter

Frequency:	628-2700 MHz
Size (LxWxD):	90mm x 90mm x 15mm

BRKT - 16



Universal Cast Swivel Bracket
for XPOL 6-10m, PATCH 25 & PATCH 26

SPLT - 14



Cellular 4-Way Splitter

Frequency:	690-960, 1710-1880 MHz
Size (LxWxD):	150mm x 165mm x 20mm

The products and specification shown in this quick guide are subject to change without notice. Please consult our web page www.poynting.tech or your sales contact for updates on our products.

Authorized Distributor:

Poynting RSA

Poynting Antennas
Unit 4, N1 Industrial Park
Landmarks Avenue
Samrand, 0157
South Africa

☎ +27 12 657 0050

✉ info@poynting.tech

Poynting EU

Poynting Europe GmbH
Kronstadter Straße 4,
81677 München
Germany

☎ +49 89 2080 265 38

☎ +49 391 590 81 850

☎ +49 176 529 733 50

✉ sales-europe@poynting.tech

www.poynting.tech

